

**LEICESTERSHIRE**

**FIRE and RESCUE SERVICE**

# **Integrated Risk Management Plan (IRMP)**

## **Proposals**

### **2009-2012**

(Aug '09)



If you ask us, we can provide the information in this document in another format such as large print, Braille, an alternative language or audio version.

If you or anyone you know would like help in reading or understanding this document please contact us on the details below, providing your name, address and explaining the type of help that you need.

### Leicestershire Fire and Rescue Service

Anstey Frith, Leicester Road, Glenfield, Leicester LE3 8HD

Telephone: 0116 287 2241 Fax: 0116 231 1180

SMS Text Facility for the Deaf: 0779 131 8325

email: infomanagement@lfrs.org website: www.leicestershire-fire.gov.uk

आ दस्तावेज़नी कोईपणू भाषन समजवामां जे आप कोई मदद छंरघतां होय तो मछेरआनी करी लेस्टरशायर फ़ायर ऐंड रेस्क्यू सर्विस (Leicestershire Fire and Rescue Service), Anstey Frith, Leicester Road, Glenfield, Leicester LE3 8HD पर संपर्क करवो. मछेरआनी करी आपनुं नाम अने सदनानुं पूरुं पाउथो अने कथां प्रकारनी मदद के जे आपने जेईछे छे, ते विगनवार जणूवथो.

এই ডকুমেন্ট এর যে কোনটি বুঝতে যদি আপনার সহায়তা দরকার হয় তবে অনুগ্রহ করে যোগাযোগ করুন: লেস্টারশায়ার ফায়ার ও রেসকিউ সার্ভিস (Leicestershire Fire and Rescue Service), Anstey Frith, Leicester Road, Glenfield, Leicester LE3 8HD দয়া করে আপনার নাম ও ঠিকানা এবং আপনার কি ধরনের সহায়তা দরকার তা উল্লেখ করবেন।

ਜੇਕਰ ਇਸ ਦਸਤਾਵੇਜ਼ ਦੇ ਕਿਸੇ ਵਿਸ਼ੇ ਨੂੰ ਸਮਝਣ ਲਈ ਤੁਸੀਂ ਕੋਈ ਮਦਦ ਲੈਣੀ ਚਾਹੁੰਦੇ ਹੋ ਤਾਂ ਕਿਰਪਾ ਕਰਕੇ ਲੈਸਟਰਸ਼ਾਇਰ ਫ਼ਾਇਰ ਐਂਡ ਰੈਸਕਿਊ ਸਰਵਿਸ (Leicestershire Fire and Rescue Service), Anstey Frith, Leicester Road, Glenfield, Leicester LE3 8HD ਨਾਲ ਸੰਪਰਕ ਕਰੋ। ਸਿਹਰਬਾਨੀ ਕਰਕੇ ਆਪਣਾ ਨਾਂ ਅਤੇ ਸਿਰਨਾਵਾਂ ਨਾਲ ਦਿਉ ਅਤੇ ਦੱਸੋ ਕਿ ਤੁਹਾਨੂੰ ਕਿਸ ਤਰਾਂ ਦੀ ਮਦਦ ਦੀ ਲੋੜ ਹੈ।

如需要協助理解本文件內任何資料請聯絡：里斯特郡消防及救援服務  
Leicestershire Fire and Rescue Service, Anstey Frith, Leicester Road,  
Glenfield, Leicester LE3 8HD  
請提供閣下姓名和地址以及說明哪條文需要幫助。

Jeżeli potrzebujesz pomocy w zrozumieniu treści tego dokumentu, skontaktuj się z Leicestershire Fire and Rescue Service, Anstey Frith, Leicester Road, Glenfield, Leicester, LE3 8HD podając swoje imię, nazwisko i adres i wyjaśniając, jakiej pomocy potrzebujesz.

اگر آپ کو اس دستاویز کے کسی بھی حصے کو سمجھنے کیلئے کسی قسم کی مدد درکار ہے تو براہ کرم لیسٹرشائر فائر اینڈ ریسکیو سروس (Leicestershire Fire and Rescue Service), Anstey Frith, Leicester Road, Glenfield, Leicester LE3 8HD سے رابطہ کریں۔ براہ کرم اپنا نام اور پتہ فراہم کریں اور آپ کو جس قسم کی مدد درکار ہے اس کی وضاحت کریں۔

यदि इस दस्तावेज़ के किसी विषय को समझने के लिए आप कोई मदद लेना चाहते हैं तो कृपया लेस्टरशायर फ़ायर ऐंड रेस्क्यू सर्विस (Leicestershire Fire and Rescue Service), Anstey Frith, Leicester Road, Glenfield, Leicester LE3 8HD से संपर्क कीजिए। कृपया अपना नाम तथा पता साथ भेजें और बताएं कि आपको किस प्रकार की सहायता की जरूरत है।





# Contents

Important Consultation .....	page 4
Our Service To You .....	page 5
The Challenge .....	page 6
Draft Proposals .....	page 7
Let Us Know Your Views .....	page 17

# Appendices

Appendix 1 .....	Map Indicating Station Locations
------------------	----------------------------------



# Important Consultation

## Your Views Matter!

This document describes Leicestershire Fire and Rescue Service's Integrated Risk Management Plan for 2009 to 2012 and also invites you to comment on our ideas.

Integrated risk management means using our resources to identify, target and reduce risk to people and property. We believe our draft proposals will make our service to the Leicester, Leicestershire and Rutland public even better – but no decisions have been taken yet. Your views on the draft proposals are important and so this document contains a Response Sheet on which to record your comments.

The consultation period ends on 31 October 2009, so please complete the response sheet and return it promptly.

You may also email your comments to **[consultation@lfrs.org](mailto:consultation@lfrs.org)** or complete the response sheet online at **[www.leicestershire-fire.gov.uk](http://www.leicestershire-fire.gov.uk)** following the consultation link.

Further contact information is given on the response sheet at the end of this document.



# Our Service to You

We aim to provide an efficient, effective and rapid emergency response service to the whole of Leicester, Leicestershire and Rutland. Our response time standard is to ensure that the first fire appliance attends emergencies (including road traffic collisions as well as fires) within ten minutes on at least 90% of occasions.

As well as responding to emergencies, we reduce risk in the community by preventing fires and protecting people and property through many youth and public education initiatives, property inspections and free home fire safety checks for households in our area - last year, we installed 6,438 smoke detectors.

To give the public a better service, over the last ten years we have improved our community safety activities, emergency planning, training, equipment, fire and

rescue stations and working practices. The resulting improvements to public safety have been considerable. In the ten years up to 2007 our area has seen:

- Accidental fires in the home (dwelling fires) reduced by 24%
- Deaths in primary fires reduced by 8% and injuries in dwelling fires by 17%
- Deliberate fires (arson) reduced by 35%
- Deliberate vehicle fires reduced by 43%
- False alarms reduced by 11%.



# The Challenge

Leicestershire's Fire and Rescue Service has not reduced its budget and we have no plans to do so. Our philosophy is 'Do more with the same, rather than the same with less!'. Our proposals for 2009-12 are not about budget cuts but are about service improvement by targeting risk and reducing danger to the community.

Risk from fires and road traffic collisions does not stand still, but varies as communities grow or change in composition. To maintain our ten minute emergency response service for Leicester, Leicestershire and Rutland in general and higher risk areas in particular, we have to:

- Monitor where emergencies are most likely to happen
- Monitor population, demographic and social changes
- Ensure that fire engines and stations are properly located to respond quickly
- Ensure value for money to the public by allocating all our resources to best effect

The current location of our fire and rescue stations and those just across our borders is shown on a map at **Appendix 1**.



# Draft Proposals

Our proposals for consultation are about changing our current emergency cover resources in the light of varying levels of risk across Leicestershire. We aim to improve the match between the risk to our communities and the allocation of our resources, whilst continuing to provide an effective and safe level of cover for everyone. The proposals are described below.

## **North West Leicestershire District**

### **New Fire and Rescue Station Proposed for Castle Donington area**

We recommend that a new wholetime, day crewed or retained fire and rescue station is built at Castle Donington. The Castle Donington area is currently under-provided with emergency cover for both fires and road traffic collisions. This is particularly significant since the North West Leicestershire Core Strategy identifies Coalville, Ashby and Castle Donington as centres for growth as rural towns. Currently, the ten minute target attendance time cannot be achieved reliably in the Castle Donington area. This is because the primary emergency fire and rescue service is provided from Loughborough Fire and Rescue Station, which is relatively busy with calls in its own

area. The provision of dedicated resources at Castle Donington will considerably reduce the need for resources to be sent from Loughborough and will improve emergency response times.

### **Proposed Closure of Moira Fire and Rescue Station**

We recommend that the retained fire and rescue station at Moira should be closed. Moira is not planned to be a rural town or to experience growth to the same extent as Castle Donington; and in any case, the north west corner of Leicestershire has two closely located fire and rescue stations, at Moira and Ashby, with emergency cover also available from Swadlincote Fire and Rescue station, just across the Derbyshire border. In this context, Moira Fire and Rescue Station currently attends only 141 calls a year (including false alarms and special services calls). On average, Moira Fire and Rescue Station attends only seven dwelling fires and 14 road traffic collisions each year. Ashby is a busier station, with 170 calls a year (including an annual average of four dwelling fires and 20 road traffic collisions). We are confident that Ashby, with continuing support from Swadlincote, could provide primary cover for all the incidents in the Moira area.

## Further Incident Data for North West Leicestershire

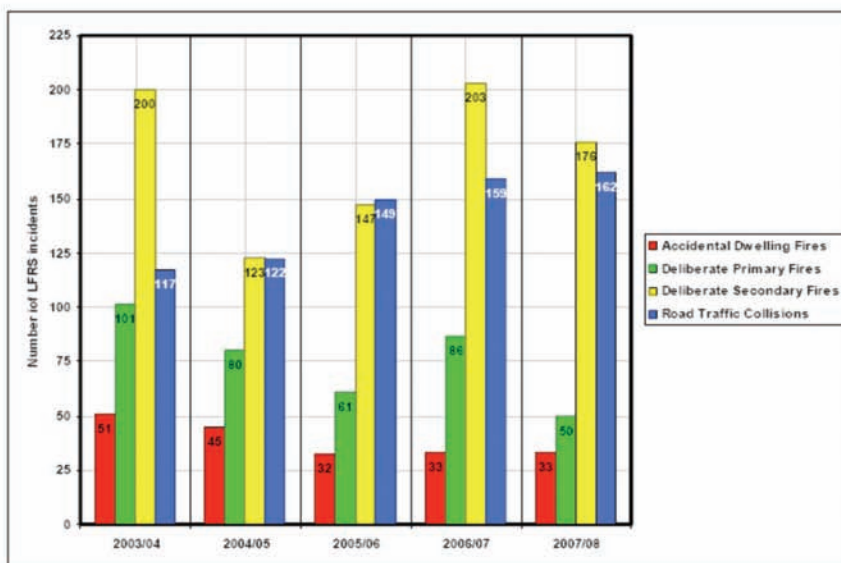
Castle Donington is a higher risk area than Moira – particularly in terms of the difficulties of achieving the ten minute response time, the number of road traffic collisions and the property profile.

**Figure 1** shows the prominence of road traffic collisions in the general incident profile for North West Leicestershire.

**Figure 1.**  
North West Leicestershire Incident Trends

The chart below shows the number of incidents by category attended by LFRS each year.

	2003/04	2004/05	2005/06	2006/07	2007/08
Accidental Dwelling Fires	51	45	32	33	33
Deliberate Primary Fires	101	80	61	86	50
Deliberate Secondary Fires	200	123	147	203	176
Road Traffic Collisions	117	122	149	159	162



### Brief Summary

The most significant change is the year on year increase in the number of RTCs. The total number of incidents is 709. This produces an average of 142 per year.

Deliberate Primary fires has decreased significantly in 2007/08. The average number of these each year is 75.

Accidental dwelling fires have remained around the same figures for the past three years, following a substantial decrease in 2005/06.

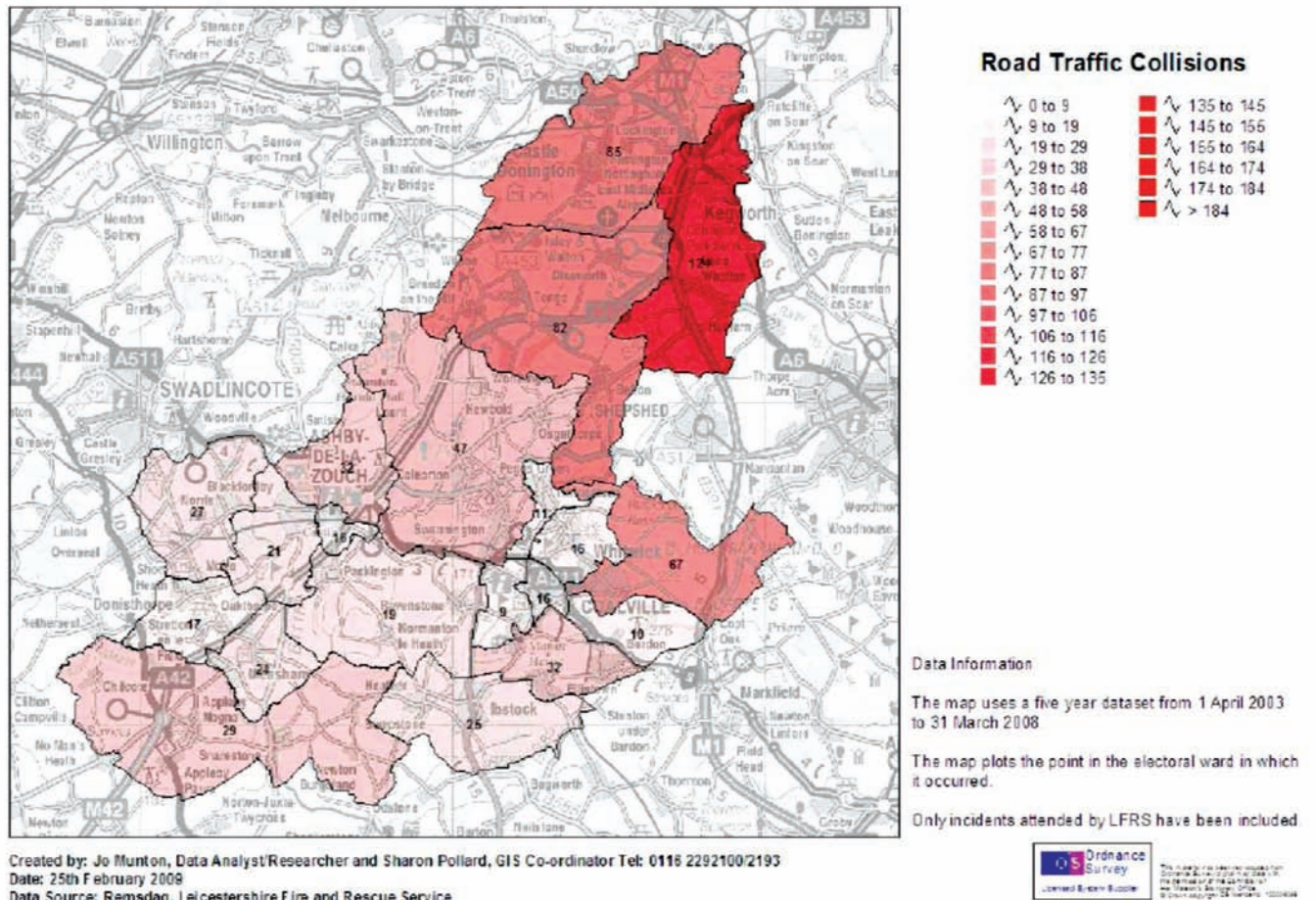
### Data Information

Remsdaq data for five years used. Data available on request.

Created by Jo Muntun, Community Risk Management and Sharon Pollard, Planning and Performance  
Date: 29 January 2009

**Figure 2** shows which areas in North West Leicestershire present the highest road traffic collision risk (based on five year's incident data).

**Figure 2.**  
Road Traffic Collision Risks in North West Leicestershire  
The darker the red, the higher the risk.



## Consultation Issues

1. Do you agree that road traffic collisions should be one of the priorities for the Fire and Rescue Service in North West Leicestershire?
2. Do you agree that emergency cover should be improved in the Castle Donington area?
3. Do you agree that Moira Retained Fire and Rescue Station can safely be closed in the context of alternative emergency cover in the area?
4. If not, what other options do you think we should consider?

## Loughborough Fire Station

### Proposed Limited Transfer of Resources to Melton Mowbray

Loughborough Fire and Rescue Station currently has two wholtime fire appliances (crewed 24 hours, seven days a week) and one retained fire appliance. We recommend that the retained appliance at Loughborough Fire and Rescue Station should be discontinued and the funds used to contribute to six of the fourteen necessary wholtime firefighter posts at Melton Mowbray.

Loughborough and Shepshed fire and rescue stations have a significant overlap of resources. Following the proposed change, Loughborough would continue to have two wholtime appliances with additional cover from Shepshed (which would also cover its own area and support the area towards Coalville and Ashby).

We are confident that the proposed redistribution of resources is feasible and safe in the context of the emergency demand on Loughborough Fire and Rescue Station.

**Figure 3** shows that the total demand on Loughborough Fire and Rescue Station is less than that handled safely by three other stations with two wholtime appliances.

### Figure 3

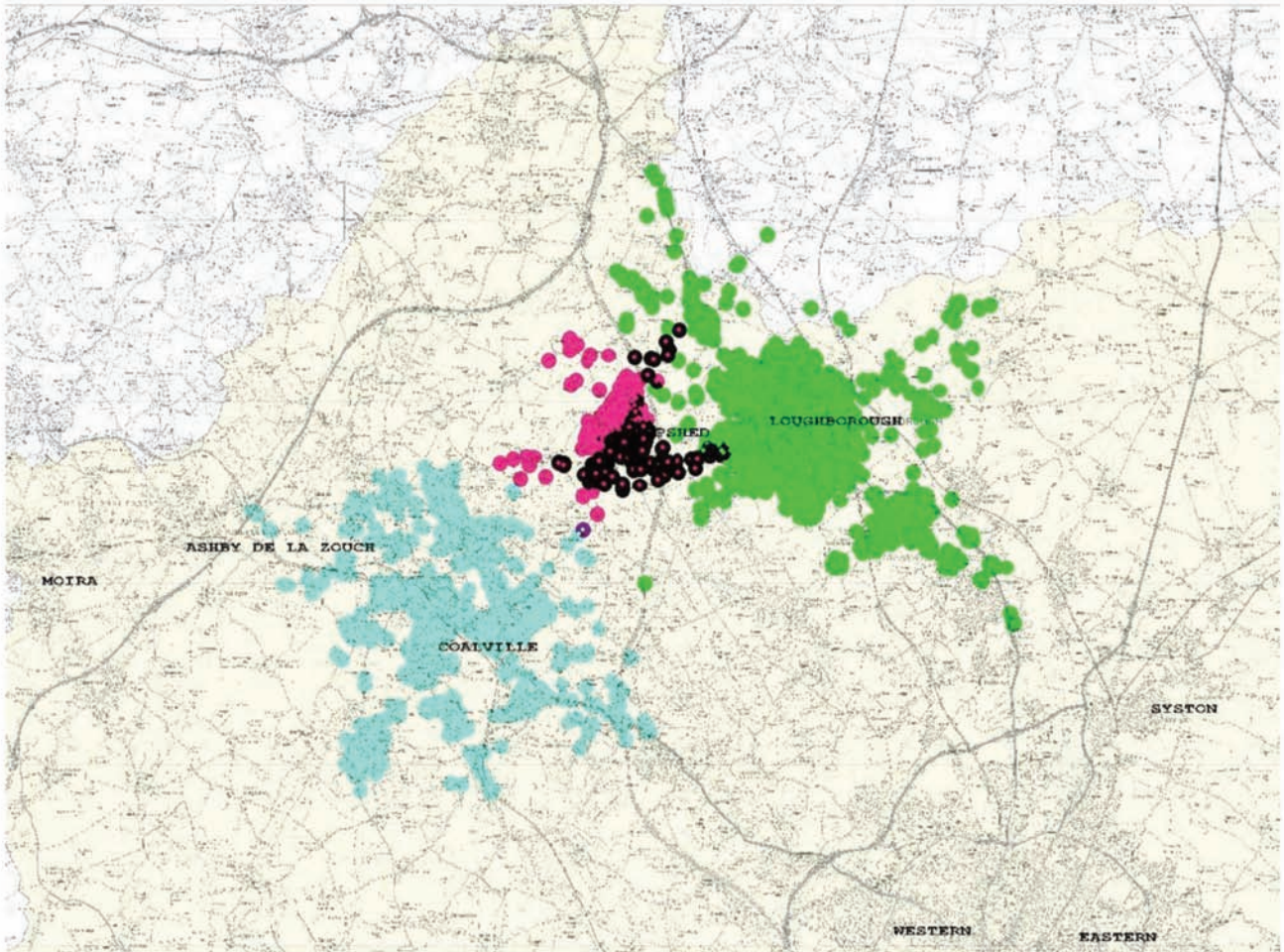
#### Comparison of Demand on Two-Appliance Stations

Station	Incidents Attended per Year
Loughborough	1,466
Eastern	1,712
Western	2,490
Central	2,426

**Figure 4** shows the overlap between Loughborough and Shepshed fire and rescue stations, based upon a ten minute attendance time.

## **Figure 4** Ten Minute Attendance Times

The cover from Shepshed is shown in pink and the cover from Loughborough is shown in Green; the black dots show the overlap. The blue dots show cover from Coalville.



### **Consultation Issues**

5. Do you agree the retained fire cover at Loughborough Fire and Rescue Station may safely be discontinued?
6. If not, what other options do you think we should consider?

## Birstall and Syston Fire Stations

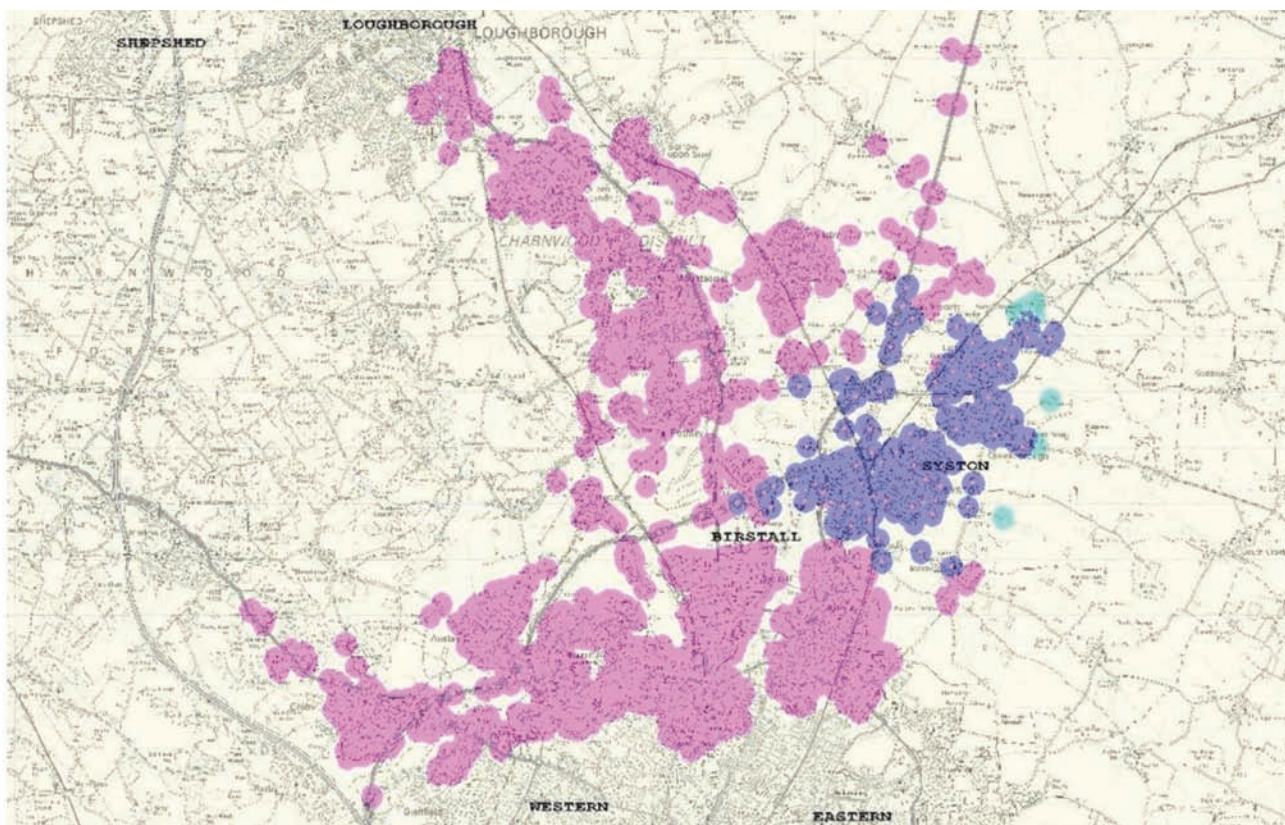
### Proposed New Wholetime Station at Birstall and Closure of Syston Retained Station

We recommend that a new wholetime fire and rescue station should be built at Birstall. Such a station would be near the A46/A6 intersection and would provide good strategic cover not only to the growing immediate area, but also to the Soar valley area. It would also reinforce Loughborough to the north, Melton Mowbray to the north east, the north of Leicester, and westwards towards Markfield. We recommend that the improved cover from a new Birstall wholetime station would

mean that the Syston Retained Fire and Rescue Station could be closed safely.

**Figure 5** shows the ten-minute cover that would be provided from a station at Birstall. The pink area shows the ten minute travel area from Birstall, while the blue area shows the current ten minute travel achieved from Syston retained station. The light blue dots show Syston's ten minute coverage that would be outside Birstall's ten minute capacity.

**Figure 5**  
Ten Minute Attendance Times From Birstall



### Consultation Issues

7. Do you agree that a new wholetime fire and rescue station at Birstall is desirable?
8. Do you agree that if a new wholetime fire and rescue station is provided at Birstall, then Syston Retained Fire and Rescue Station may safely be closed?

## Hinckley Fire and Rescue Station

### Proposed Transfer of Eight Firefighters to Melton Mowbray

We recommend that the number of firefighters on each of the four Hinckley watches should be reduced from ten to eight. For the last few years, the four watches at Hinckley Fire and Rescue Station have had ten wholtime firefighters, compared with the standard eight (at similar stations).

The reduction from ten to the standard eight can be achieved without reducing the number of fire engines available, but would release eight wholtime firefighter positions for redeployment to Melton Mowbray.

#### Consultation Issues

9. Do you agree with the proposal for Hinckley Fire and Rescue Station?

## Melton Mowbray Fire Station

### Proposed Transfer of Firefighters to Melton Mowbray

We recommend that a total of 14 firefighters should be transferred to Melton Mowbray by implementing the changes described above at Hinckley and Loughborough.

Currently, Melton Mowbray has two fire engines crewed by retained firefighters, but the station attends 469 calls a year, including an average of 17 dwelling fires and 53 road traffic collisions. The nearest station at Oakham has both wholtime and retained crews, but the station attends an average of average of 332 calls each year, including 11 dwelling fires and 36 RTCs.

The incident levels at Melton Mowbray, combined with its relative isolation and planned growth, mean that the station merits improved emergency cover. We propose to use the 14 posts transferred from Hinckley and Loughborough to provide an additional day-crew watch – so that the station's first appliance would normally be crewed by wholtime firefighters seven days a week, from 7am to 7pm. This enhanced level of cover will increase the resilience of the local service substantially.

#### Consultation Issues

10. Do you agree with the proposals for Melton Mowbray Fire and Rescue Station?
11. Are there any other options we should consider?

## Station Crewing Levels

### Proposed Reduction in the 'Ridership' Factor

In calculating the number of wholetime firefighters required to crew appliances at each station, an allowance is made to compensate for absences due to holiday leave, sickness and training courses held away from the station. The level of allowance is called the 'ridership factor' that determines the number of extra firefighters required to ensure the safe crewing of the fire appliances at all times.

For many years, for fire and rescue stations with two appliances, Leicestershire Fire and Rescue Service has employed 13 firefighters per watch in order to ensure that nine are always available to crew two fire engines. The absolute minimum we allow to crew a fire engine is four personnel.

However, sustained improvements in the levels of sickness absence means that the ridership calculation at two appliance stations can now be reduced safely – so that a total of 12 firefighters is sufficient to ensure that nine crew members are available to crew two appliances. A reduction from 13 to 12 in the ridership factor at Eastern, Western and Loughborough stations would release a total of 12 firefighter posts for redeployment to more useful work within the Fire and Rescue Service, as the table below shows.

Wholetime Firefighters at:	Current Watch Strength	Proposed Watch Strength	Current Station Strength	Proposed Station Strength
Coalville	7	7	28	28
Oakham	7	7	28	28
Southern	7	7	28	28
Wigston	7	7	28	28
Hinckley	10	8	40	32
Loughborough	13	12	52	48
Eastern	13	12	52	48
Western	13	12	52	48
Central	15	15	60	60
Technical Rescue	7	7	28	28

### Consultation Issues

12. Do you agree with the proposed reduction in the 'ridership factor'?

## Fire Engine Crewing Levels

### Proposed Reduction from Five to Four Crew Members at City Fire and Rescue Stations

We recommend that fire engines at Eastern, Western and Central stations should routinely be crewed by four firefighters, which is an acknowledged safe number. We believe that it is safe to make this change at Leicester City fire and rescue stations due to their proximity and ability to provide mutual reinforcements within a reasonable time period. The creation of a new wholetime station at Birstall in the north of Leicester will provide further reinforcement.

If this change is made, then a total of 12 firefighter positions will be released from the Eastern (Hastings Road, Leicester), Western (Aikman Avenue, New Parks) and Central (Lancaster Place, Leicester) Stations for redeployment to other valuable fire and rescue work in Leicestershire.

See table below.

Wholetime Firefighters at:	Watch Strength with New Ridership Applied	Proposed Watch Strength	Revised Station Strength Following Changes to Ridership	New Proposed Station Strength
Coalville	7	7	28	28
Oakham	7	7	28	28
Southern	7	7	28	28
Wigston	7	7	28	28
Hinckley	10	8	40	32
Loughborough	13	12	48	48
Eastern	12	11	48	44
Western	12	11	48	44
Central	15	14	60	56
Technical Rescue	7	7	28	28

### Consultation Issues

13. Do you agree with the proposed reduction from five to four crew members at city fire and rescue stations?

## Front Line Resilience Team

### Proposal to Establish a Resilience Team of Eight Firefighters

We recommend that a team of eight firefighters should be established to provide improved resilience across our fire and rescue stations.

The changes to the 'ridership factor' and fire engine crewing at the city fire and rescue stations (described above) will release a total of 24 firefighter positions for redeployment. We propose to use eight of these posts to create a team of wholetime firefighters to support operations across Leicestershire. This team will ensure an improved availability and resilience for all stations in the north, but it will give particular support to the retained stations – where

firefighter availability may be difficult at certain times of the day. The resilience team will also provide support for the transitional arrangements at both Castle Donington and Birstall.

(The remaining 16 posts will crew the proposed new wholetime station at Birstall (along with reassigned posts from Syston Fire and Rescue Station).

### Consultation Issues

14. Do you agree with the proposal to establish a resilience team of eight firefighters?



# Let Us Know Your Views

We believe our draft proposals will make our service provision to all of the communities in Leicester, Leicestershire and Rutland even better. However, no decisions have been finalised yet and your views on the draft proposals are important.

Following the consultation period, Leicester, Leicestershire and Rutland Combined Fire Authority will consider your views in detail – in particular at a meeting of the Combined Fire Authority in December 2009. The Fire Authority will then decide in the light of all the issues, whether the proposals of the Fire and Rescue Service Officers should be implemented, rejected or amended.

The consultation period ends at 5pm on 31 October 2009.

You may email your comments to **[consultation@lfrs.org](mailto:consultation@lfrs.org)** or complete the response sheet on line at **[www.leicestershire-fire.gov.uk](http://www.leicestershire-fire.gov.uk)**

You may also write to us at:

**Leicestershire Fire and Rescue Service  
Anstey Frith  
Leicester Road  
Glenfield  
Leicester  
LE3 8HD**

## Disclosure

Please note that Leicestershire Fire and Rescue Service intends to publish a summary of the responses to this consultation document. Normally, the name and part of the address of the authors are published along with the responses, as this gives credibility to the consultation exercise. If you do not wish to be identified as the author of your response, please inform us of this in writing.



A decorative graphic at the top of the page, consisting of a solid red background with three white, rounded, teardrop-like shapes cut out from it, arranged horizontally.

# Appendices

